

# Metrika Node Monitoring Solution

Sponsored by the Flow Foundation to help manage the health and performance of your nodes

*“We’re excited to partner with Metrika to provide Node Operators on the Flow Network with end-to-end visibility into the operational health of their nodes. Metrika’s community based tools will support Flow’s continuing efforts to maintain a level of performance and trust that our growing ecosystem demands.”*



Vishal Changrani, Flow Product Manager, Dapper Labs

## The Metrika Node Monitoring Solution supports the Flow Ecosystem by providing:



### Continued Decentralization

Support network decentralization with more coordinated operations, greater transparency & built-in collaboration.



### Operational Efficiency

Empower Node Operators with community tools to monitor, identify, and resolve operational issues related to node performance.



### Network Reliability

Proactively monitor network performance, reduce downtime and resolve issues faster.



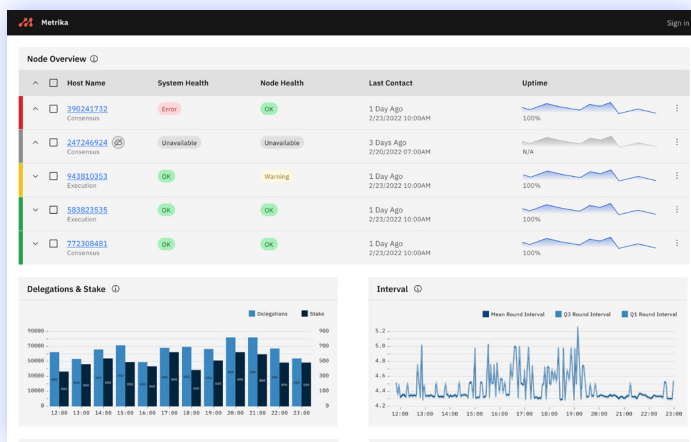
### Fuel Ecosystem Growth

Deliver a level of performance that drives mainstream adoption, network engagement, and brand affinity.

# The Flow Foundation and Metrika are providing you with real-time node monitoring, alerts and analytics for the Flow network.

- **Reduce slashing** with alerts and actionable insights into performance-based activities that impact slashing
- **Increase performance-based rewards** by isolating problems and resolving issues before they impact rewards
- **Contribute to the community** by improving the health & resiliency of the Flow Network

## Scale with Out-of-The Box Monitoring

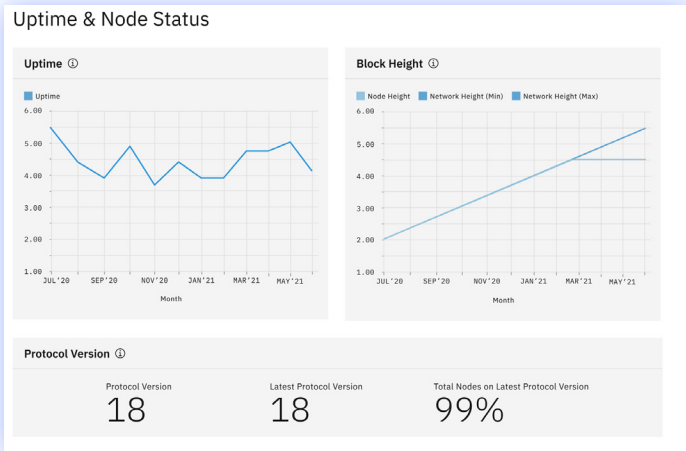


As Node operators you don't have the time to become subject matter experts for each protocol.

Metrika Node Monitoring capabilities:

- Built for decentralized networks
- Provides you with pre-configured alerts & dashboards to give you a comprehensive view into the performance of your nodes
- **Example dashboards:** Network activity, Node performance, System health

# Gain Visibility with Actionable Blockchain Insights

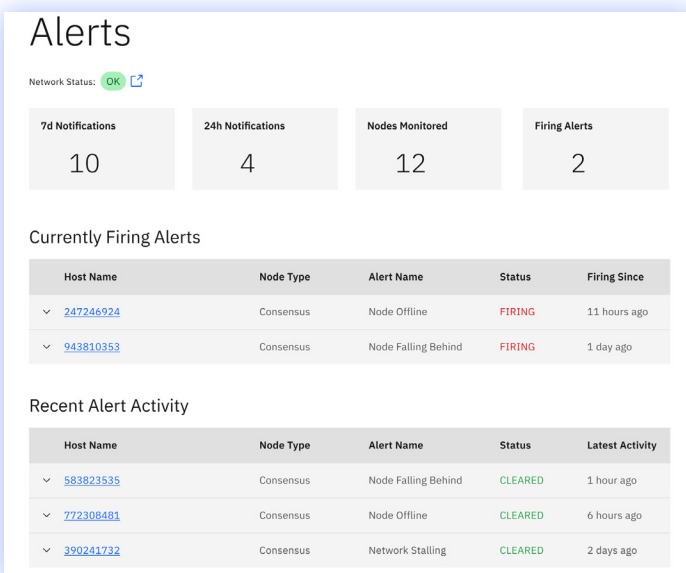


Existing monitoring tools lack the visibility and insights into blockchain specific activity.

Metrika's Node Monitoring is built for web3 providing:

- Deep visibility into protocol-specific operations and participation on the Flow network
- Real-time alerts & dashboards that enable early detection of degradations in node performance and faster recovery from incidents
- **Example insights:** Node falling behind chain, low block finalization ratio, low voting

## Enrich Observability and Redundancy

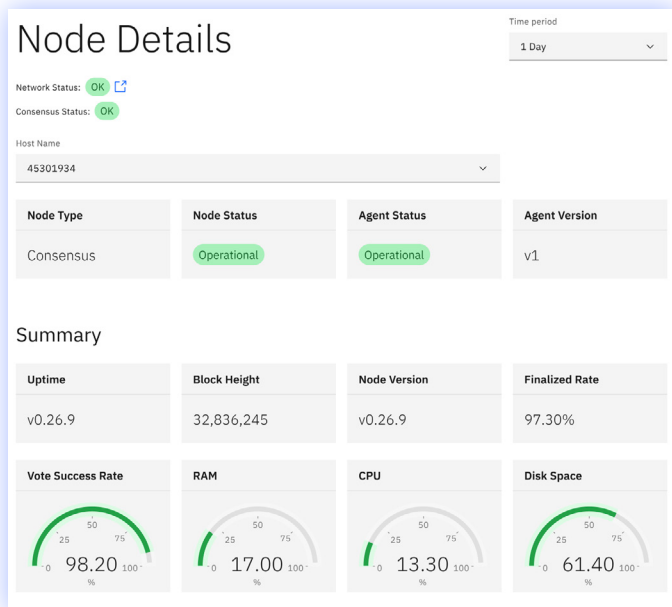


Identifying the scope of performance issues is challenging. Compounding this is the lack of independent services to monitor the operational health of your nodes.

Metrika provides:

- End-to-end monitoring across system, node and network health powered by independent services.
- Actionable insights to benchmark node performance and easily pinpoint system, node or network issues.
- **Example insights:** High CPU usage, node offline, network stalling

# Keep your Data Safe with Comprehensive Security



A security first approach is critical for your node operations with customer data safety being a top priority.

Built in line with industry-wide standards and processes to keep your customer data confidential, Metrika takes a proactive approach to customer security and keeping your data safe.

## Features and capabilities include:

- **Open Source:** The Agent code is publicly accessible and available to anyone who wants to review or contribute to it.
- **Audited:** Regularly audited by independent security auditors. Results are made publicly available.
- **System Dependencies:** The Agent is written in Go and distributed as a statically linked binary. There are no additional runtime dependencies on local systems.
- **Third Parties:** Best practices during development designed to minimize the use (and risk) of 3rd party packages.
- **Data Access:** If needed, resource limits can be set using Linux cgroups. The Agent has limited disk access and restricted access to node logs and configuration files.
- **Data Customization:** Configuration options to control and customize the kinds of data the Agent parses and transmits.
- **Encryption:** Data is secured in transit and protected using Transport Layer Security (TLS) v1.3.
- **Authentication:** The Metrika Platform currently supports Google & Github's OpenID services.
- **Access Management:** Role-based controls to restrict access to data and features.

Explore Community Dashboard